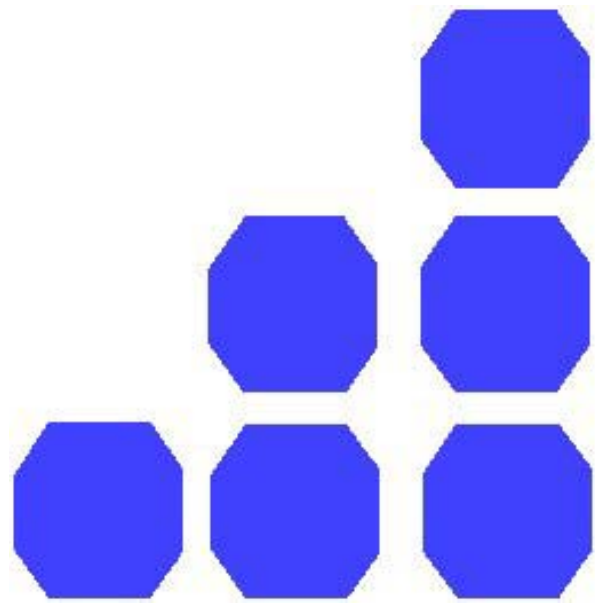


PlantSTATS

KEG&CASK

The industry standard bulk-fill monitoring system for the brewing industry





PlantSTATS~KEG&CASK

The industry standard bulk-fill monitoring system for the brewing industry



PlantSTATS~KEG&CASK is an industry standard weight and quality monitoring system for **Kegs** and **Casks**, providing a complete solution for Customs and Excise and Average Contents.

PlantSTATS~KEG&CASK conforms to the requirements of the Brewing Society Guidelines for Bulk Pack Fill Monitoring.

PlantSTATS~KEG&CASK operates in two modes:

- **Manual Data Capture** whereby an Operator enters information using either a touchscreen or keyboard and mouse.
- **Automatic Data Capture** whereby rotary PlantSTATS~KEG&CASK connects to a filler and receives and records data automatically.



Schedule

Racker: K1 Keg Racker
 Quality: LBRAU Lowenbrau Strong
 Container: K30 30 Litres
 Batch: LBRAU_BATCH_001
 Order: LBRAU_ORDER_001

OK Cancel

Batch: LBRAU_BATCH_001
 Order No: LBRAU_ORDER_001
 PG: 7 Sample Mean: 6061.581 Overall Mean: 6061.581

Item	Lane	Tare	Gross	Meter	Net	Re-sample	Rejected
1	1	5.999	36.223	903.000	30.100	No	No
2	2	6.012	36.235	903.000	30.099	No	No
3	3	6.033	36.245	30.088	30.088	No	No
4	4	5.999	36375.000	908.000	36219.413	Yes	No
5	5	5.999	35.118	870.000	28.999	Yes	Yes
6	6	5.999	35.871	892.000	29.749	No	No
7	7	6.033	36.191	901.000	30.034	No	No

Add... Edit... Resample Delete

Item	Lane	Tare	Gross	Meter	Net
4	4	0.000	0.000	0.000	0.000
5	5	0.000	0.000	0.000	0.000

Edit... Save Memo... Cancel

PlantSTATS~KEG&CASK conforms to current HMCE and Trading Standards requirements.

PlantSTATS~KEG&CASK connects to all standard PC networks giving live data at the manager's desktop.

Filled Items - LargePack v6 Data Analysis

File View Tools Help

Dates Quality Container Racker Run Status

Filter on Dates
 Start: 01 January 2006 00:00
 End: Today
 02 February 2006 00:00

Containers
 003863 KEG 50 LITRE
 31/01/2006 13:06:10
 31/01/2006 17:01:36

Sample Time: 31/01/2006 17:01:36 Operator: ADMINISTRATOR
 PG: 5.7 Mean: 50.232

Lane	Gross	Tare	Net	Meter	%EDL
1	62.740	12.510	50.088	1503.000	
2	62.733	12.600	49.991	1499.000	
3	64.150	13.695	50.312	1513.000	
4	62.032	12.628	49.264	1478.000	
5	64.150	12.498	51.506	1545.000	*
6	61.032	11.983	48.910	1467.000	*

Database: LPDATABSE



is the author of the software used by Trading Standards



West Yorkshire Trading Standards Service



A cost-effective solution for the Brewing Industry

ICCS has been writing quality control software since the early 1980s. With over 100 satisfied customers, ICCS is proud of the fact that its products have helped many companies (small and large) to safeguard their operations to the benefit of all concerned.

Some of ICCS' customers include...

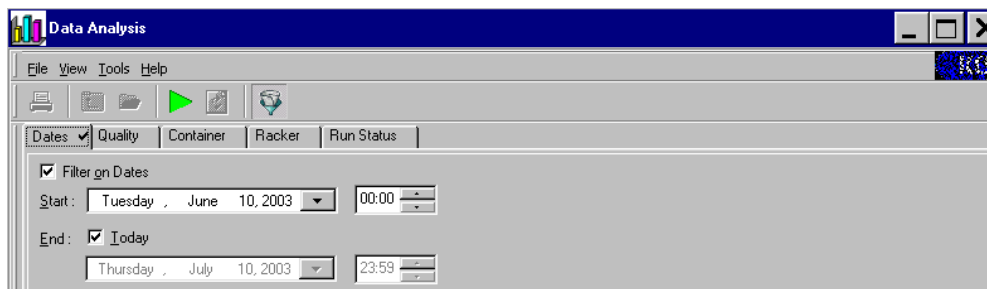


ICCS is the recognised leader in providing quality assurance and control systems, for high speed, process-packaging operations.

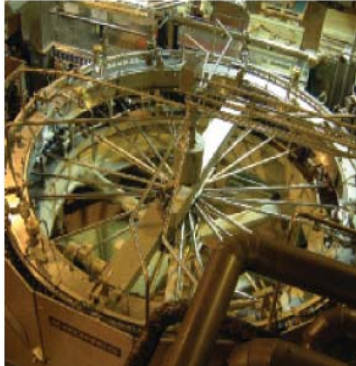
PlantSTATS~KEG&CASK provides the correct level of information, instantly and accurately.

ICCS take care of the whole project – design, project management, installation, training and support.

PlantSTATS~KEG&CASK provides paperless storage for up to six year's worth of data.



ADDITIONAL MODULES



PlantSTATS~DOWNTIME & OVERALL EQUIPMENT EFFECTIVENESS (O.E.E.) MONITORING

Many often use simple spreadsheets, relying on Line Operators to record downtime intervals and reasons. These 'quick fix' systems do little to improve performance because busy Line Operators, whom priority is to keep the line running, will ignore short stoppages that can account for much of the downtime. Furthermore such systems often cannot prove O.E.E. measures because they ignore machine speeds and quality.

- **PlantSTATS DOWNTIME AND O.E.E.** automatically records all downtime intervals, equipment output plus pack and case counts providing a 100% accurate picture of plant performance and O.E.E.
- **PlantSTATS DOWNTIME AND O.E.E.** reporting features provide real-time (and historical) web based reports, which are used to identify and continually improve performance.

PlantSTATS~REAL-TIME DATA CAPTURE

PlantSTATS~REAL-TIME DATA CAPTURE is a powerful tool to record production information, due diligence records and legislative information from a wide range of production line monitoring equipment. Weight and yield information from multihead weighers and checkweighers, audit records from metal detectors and x-rays, performance data from the complete line, all are collected in real-time to give Production and Technical Managers the tools to reduce costs and ensure compliance.



PlantSTATS~QUALITY

- **PlantSTATS~QUALITY** provides production line-operators and managers with a powerful tool to capture , analyse and trace all quality data.
- **PlantSTATS~QUALITY** can trace quality data from bulk-tank tests through to palletisation.
- **PlantSTATS~QUALITY** provides real-time operator feedback permitting immediate corrective action plus the power to store and analyse years of data.

PlantSTATS~PHARMA

- **PlantSTATS~PHARMA** is for the recording and analysis of In-Process Checks.
- **PlantSTATS~PHARMA** complies with all EU and US standards to provide a complete solution to the real-time monitoring and reporting, and paperless storage of In-Process Checks.
- Electronic signatures and audit trail FDA 21 CFR Part II compliant.



CALL TODAY TO DISCOVER HOW PlantSTATS~WEIGHING CAN IMPROVE THE EFFICIENCY OF YOUR LINES



ICCS Ltd

4 Market Street, Edenfield, Ramsbottom, Bury, Lancashire, BL0 0JN
Tel: 01706 822233 **Fax:** 01706 822233 **Web:** www.iccs-ltd.co.uk **E-mail:** info@iccs-ltd.co.uk