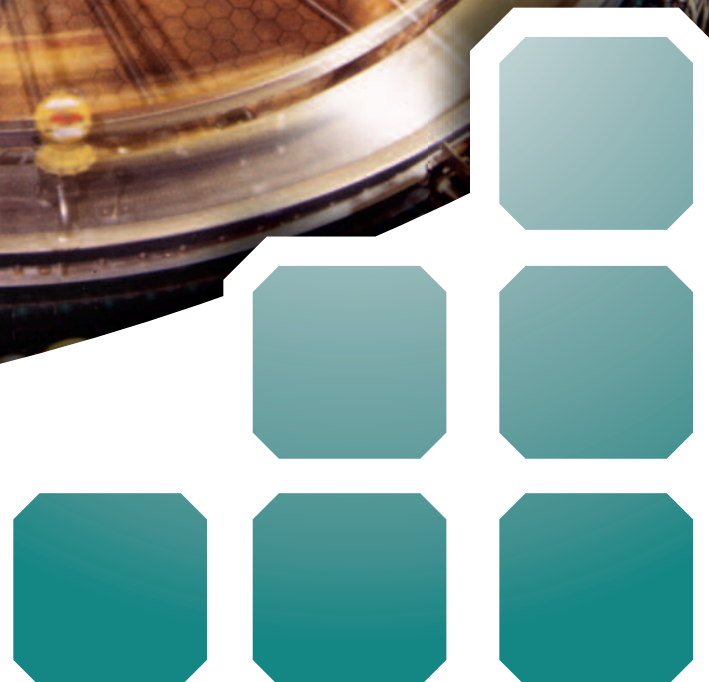




# PlantSTATS

## DOWNTIME AND O.E.E.

The Complete Downtime and OEE  
– Web Based – Monitoring System



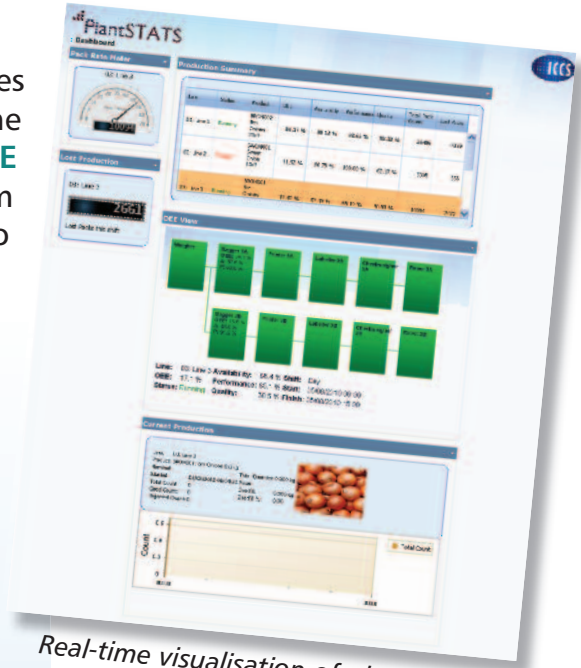
# The Complete Downtime and O.E.E. Monitoring System

## FEATURES AND BENEFITS

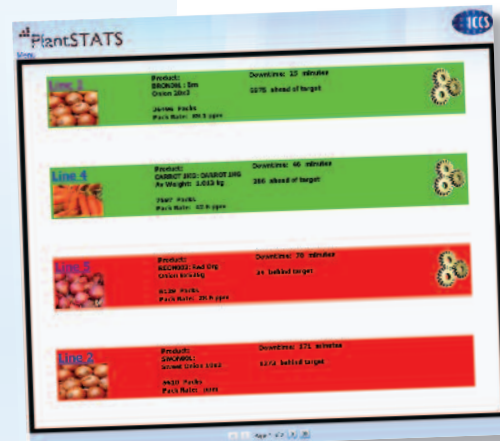
### Easy to use and 100% accurate

The **PlantSTATS DOWNTIME AND O.E.E.** software provides production management with a powerful tool to analyse the down time and efficiency of the line. **PlantSTATS DOWNTIME AND O.E.E.** can quickly identify your efficiency issues, from reliability problems on individual pieces of equipment, to material supply problems.

- ✓ Single or multi-site data held in one SQL database
- ✓ Web-based for ease of deployment
- ✓ Downtime recorded automatically and accurately in real time
- ✓ Keypads with reason buttons to identify the cause of stoppages. Stoppage reasons can also be automatically accepted from PLC's
- ✓ Interlock relay – forcing operators to record a reason for downtime
- ✓ HMI (Human Machine Interface)
  - Dashboard permits each manager to customise their PC screen to display the data they wish to see in real time
  - Real time email alerts based on user defined Availability, Performance and Quality limits
  - Interface for end-of-line moving message display of OEE parameters and production progress
- ✓ Reporting
  - Short interval control sheets
  - Clear visualisation of plant performance by shift, line, machine reason and date range
  - Clear display of top-ten reasons for downtime
  - Performance information is available immediately, permitting timely and cost saving intervention
- ✓ Labour and production costs
  - Per unit
  - Per batch
  - Against target
- ✓ Current production data, for each line, can be obtained from:
  - PlantSTATS Smart Keypad
  - By the line PC display
  - Barcode scanner
  - Links to external databases
  - PlantSTATS~Quality module
- ✓ Minimum training required for line operators
- ✓ Unique semi-automatic design at a fraction of the cost of PLC based systems



Real-time visualisation of plant status



Real-time progress of current production



Real-time and historical reports

## Simple data entry

**PlantSTATS DOWNTIME AND O.E.E.** Smart Terminals are fitted to each piece of equipment to monitor both the running status and the line control signals. If a stoppage occurs that is caused by a fault on the machine, the operator will have to select the reason for the stoppage on the keypad. If no reason is entered the line will not restart.



Buttons are user-definable



Visual status of each machine

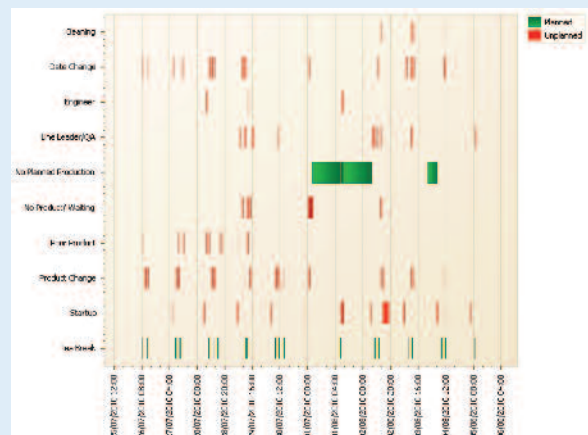
Data from each **PlantSTATS DOWNTIME AND O.E.E.** Smart Terminal is collected centrally in a SQL database allowing analysis of the downtimes and associated reasons that have impacted on production.

## Andrew Murray at Britvic Soft Drinks said:

“Since its introduction in June 2007 **PlantSTATS DOWNTIME AND O.E.E.** has provided the information we needed to improve productivity. In the first 10 weeks we made:

- A 20% improvement in our Machine - Mean Time Between Failure (MTBF).
- An 8% reduction in our downtime, giving an added 24hrs of available time for Increased Volume, Planned Maintenance or Focused Improvement.

In addition, **PlantSTATS DOWNTIME AND O.E.E.** allows us to highlight our top 20 daily loss issues, and from that data we have been able to set focused teams working towards zero loss.



100% accurate measure of stoppages

# Integrate other applications into PlantSTATS DOWNTIME AND O.E.E.

Real-time data collection from Checkweighers, Multi-head fillers, Metal detectors etc

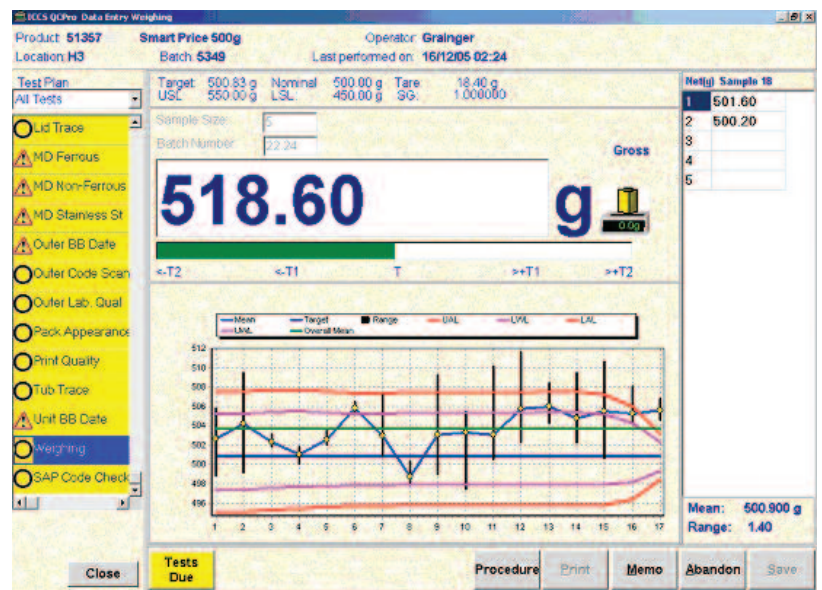
- **PlantSTATS LINE MONITOR** automatically captures production and trading standards data generated by in-line checkweighing and metal detection equipment.
- **PlantSTATS LINE MONITOR** permits data to be presented in a variety of tabular and graphical forms and sorted and searched in many different ways, including: Current Production, % overfill, Overfill Costing, Average Weight Control, Batch Performance, Shift Performance, Historical Analysis, Metal Detection Analysis and Line Performance Analysis.
- Web based for ease of deployment on single or multiple sites.



100% accurate overfill costs, pack counts and reject counts

## WEIGHT and ATTRIBUTE MONITORING

- **PlantSTATS QUALITY** is a Real Time Quality Monitoring System providing a complete solution for: Weight Control, Attributes, HACCP, Costed Overfill, Line Efficiency, Defects, Data and Barcode Checks, Audit Trail, Aerosols, Ready Meals, Chocolate %.
- **PlantSTATS QUALITY** provides professional reports in seconds - no more searching through mountains of paper.
- Can be interfaced to most electronic balances and other quality monitoring instruments.



CALL TODAY TO DISCOVER HOW PlantSTATS DOWNTIME AND O.E.E. CAN IMPROVE THE EFFICIENCY OF YOUR LINES



ICCS Ltd

4 Market Street, Edenfield, Ramsbottom, Bury, Lancashire, BLO 0JN

Tel: 01706 822233 Fax: 01706 822277 Web: www.iccs-ltd.co.uk E-mail: info@iccs-ltd.co.uk